

Quadratics Features Homework

MFM2P

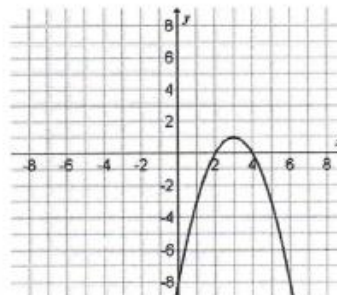
Date: _____

Analysis of the Parabola – Practice Questions

Complete the analysis for each of the following parabolas.

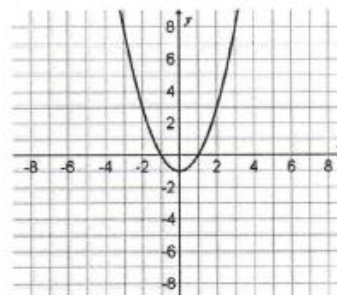
Draw the axis of symmetry and state its equation	
Draw and state the zeroes (x-intercepts)	
Draw and state the y-intercept	
State the direction of opening of the parabola	
Draw and state the vertex as an (x, y) point	

Max or min value :



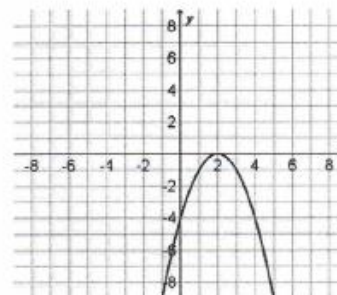
Draw the axis of symmetry and state its equation	
Draw and state the zeroes (x-intercepts)	
Draw and state the y-intercept	
State the direction of opening of the parabola	
Draw and state the vertex as an (x, y) point	

Max or min value :



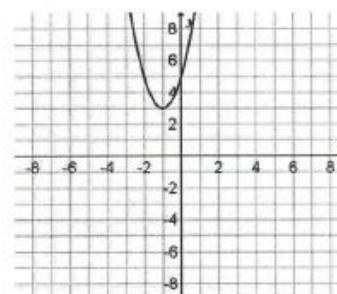
Draw the axis of symmetry and state its equation	
Draw and state the zeroes (x-intercepts)	
Draw and state the y-intercept	
State the direction of opening of the parabola	
Draw and state the vertex as an (x, y) point	

Max or min value :



Draw the axis of symmetry and state its equation	
Draw and state the zeroes (x-intercepts)	
Draw and state the y-intercept	
State the direction of opening of the parabola	
Draw and state the vertex as an (x, y) point	

Max or min value :



Quadratics Features Homework

MFM2P

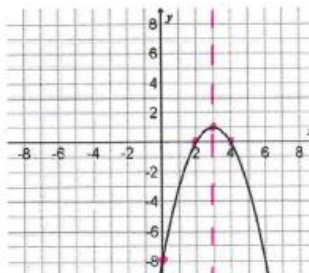
Date: Solutions

Analysis of the Parabola – Practice Questions

Complete the analysis for each of the following parabolas.

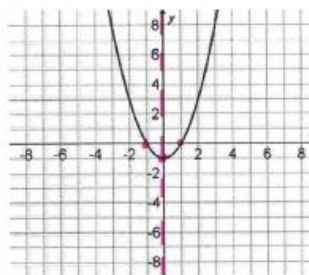
Draw the axis of symmetry and state its equation	$x = 3$
Draw and state the zeroes (x-intercepts)	$(2, 0)$ $(4, 0)$
Draw and state the y-intercept	$(0, -8)$
State the direction of opening of the parabola	down
Draw and state the vertex as an (x, y) point	$(3, 1)$

max value: 3



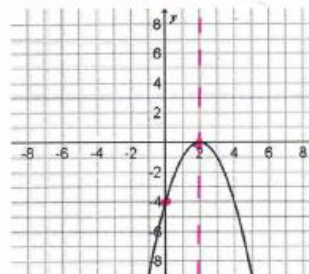
Draw the axis of symmetry and state its equation	$x = 0$
Draw and state the zeroes (x-intercepts)	$(1, 0)$ $(-1, 0)$
Draw and state the y-intercept	$(0, -1)$
State the direction of opening of the parabola	up
Draw and state the vertex as an (x, y) point	$(0, -1)$

min value: -1



Draw the axis of symmetry and state its equation	$x = 2$
Draw and state the zeroes (x-intercepts)	$(2, 0)$
Draw and state the y-intercept	$(0, -4)$
State the direction of opening of the parabola	down
Draw and state the vertex as an (x, y) point	$(2, 0)$

max value: 0



Draw the axis of symmetry and state its equation	$x = -1$
Draw and state the zeroes (x-intercepts)	None
Draw and state the y-intercept	$(0, 5)$
State the direction of opening of the parabola	up
Draw and state the vertex as an (x, y) point	$(-1, 3)$

min value: 3

